

NutriSync®

Nutrition on the *Move*



Mobilize essential nutrients to areas of peak demand.



Utilize key nutrients at critical growth stages.



Enhance plant metabolism and transport of nutrients.



Increase plant cell integrity.



Increase overall plant growth and vigor.

Improving plant nutrient uptake, transport and utilization

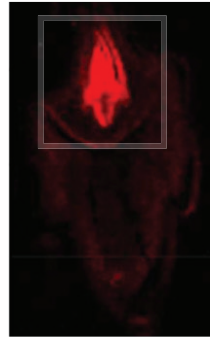
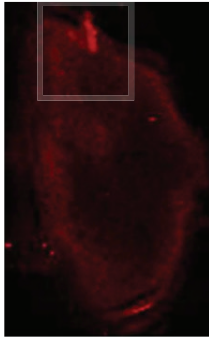
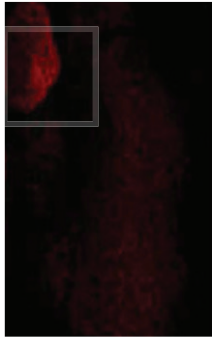
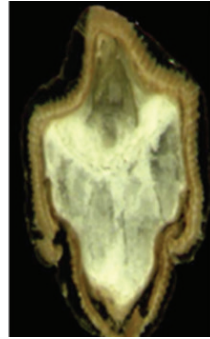
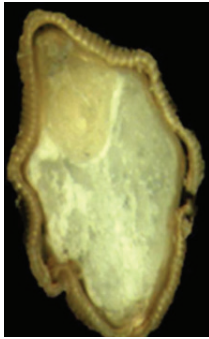
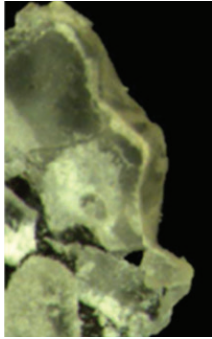
NUTRISYNC and **NUTRISYNC** Foliar Micronutrients prompt crops to move existing and applied nutrients from the roots and older leaves to new growth areas where they are needed most for plant growth and productivity. By remobilizing nutrients within the plant, **NUTRISYNC** Nutrient Transport Technology helps to supply your crop with key nutrients to the areas of highest demand, which can result in healthier plants, faster growth, higher yield potential, and more consistent quality.

How does **NUTRISYNC** Nutrient Transport Technology work in plants?

NUTRISYNC Nutrient Transport Technology is a naturally occurring carbohydrate that supports many of the processes that are central to plant growth and development, including nutrient uptake, storage, transport and use. It also plays a role in cell signalling in the plant, production of the plant cell wall and response to salt stress. **NUTRISYNC** Technology is the reason foliar nutritional tools powered by **NUTRISYNC** consistently perform when other foliar nutrients may fail.



NutriSync Products Performance - Rice Kernal Cross Section



Untreated

Foliar Micronutrient

Foliar Micronutrient
with **NutriSync**

*Higher accumulation of applied nutrient as indicated
by higher concentration of bright red in photos.
Source: Dr. Patrick Brown, UC Davis, data generated at Stanford National Lab*

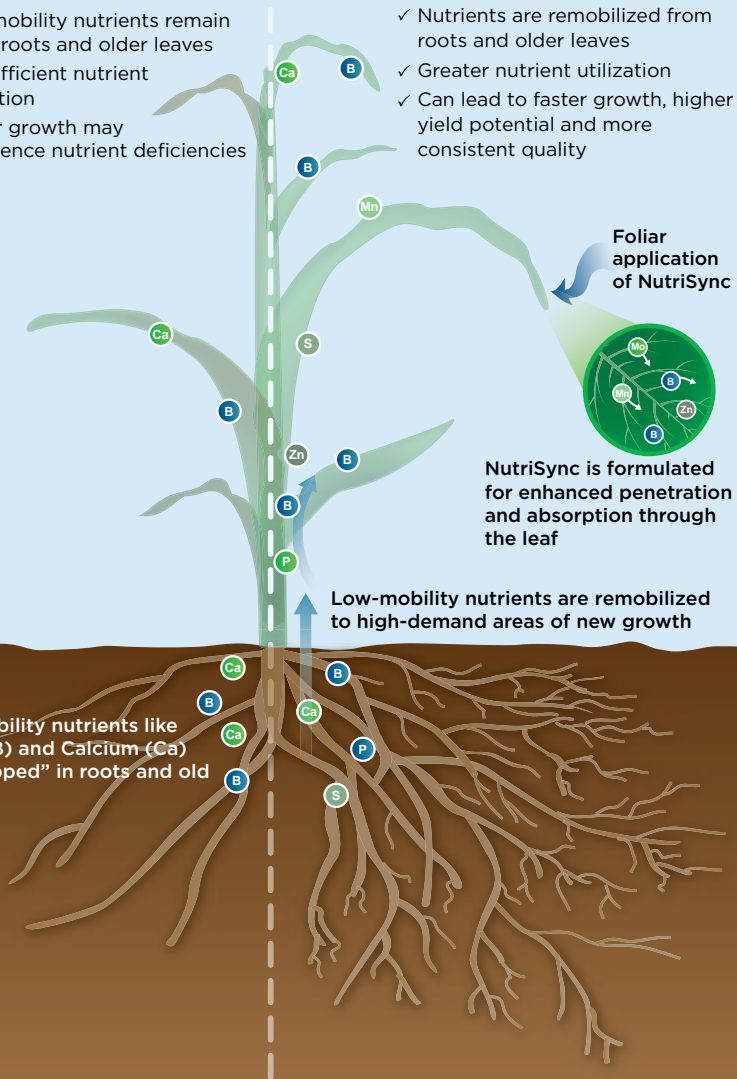
How It Works

Without NUTRISYNC

- ✓ Low-mobility nutrients remain in the roots and older leaves
- ✓ Less efficient nutrient utilization
- ✓ Newer growth may experience nutrient deficiencies

With NUTRISYNC

- ✓ Nutrients are remobilized from roots and older leaves
- ✓ Greater nutrient utilization
- ✓ Can lead to faster growth, higher yield potential and more consistent quality



Next level nutrition is here.

Most nutrition programs kind of look the same—until they don't. If you take a closer look at NutriSync products, you'll see a proprietary nutrient transport technology like nothing else on the market. NutriSync brand micronutrients contain a naturally occurring carbohydrate that moves nutrients through the vascular tissue to the growing points where they are needed most.

NutriSync[®] **D**

NutriSync[®]
Boron

NutriSync[®]
Calcium

NutriSync[®]
Complete 

NutriSync[®]
Copper 

NutriSync[®]
Magnesium

NutriSync[®] **M**

NutriSync[®]
Manganese

NutriSync[®]
Micro Pak 

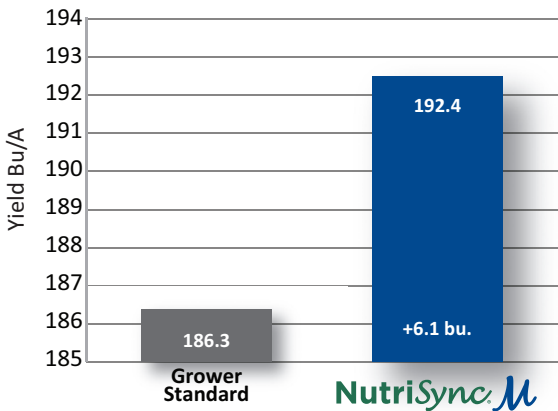
NutriSync[®]
Phos 

NutriSync[®]
Sulfur

NutriSync[®]
Zinc

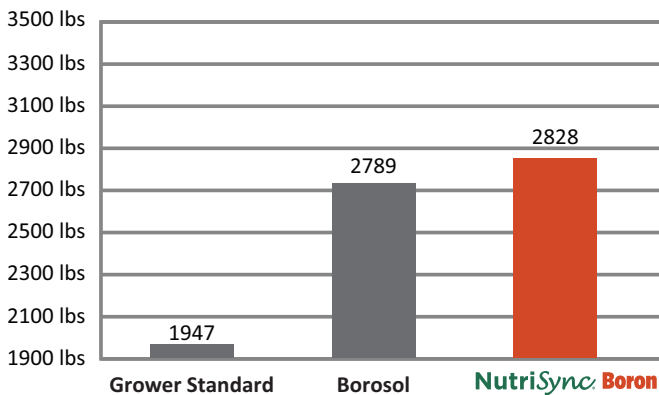
Innovative & Focused Plots

8 year NutriSync M Summary on corn (100 trials)



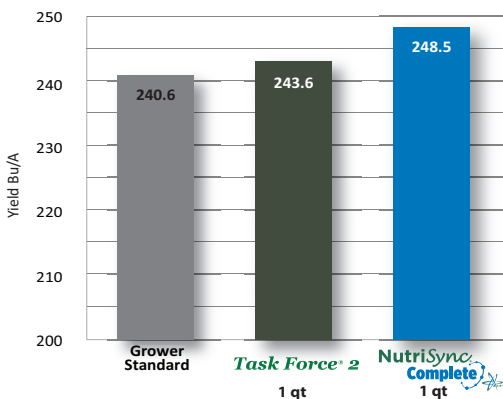
Minnesota/South Dakota Division trials

Average of 10 Cotton Plots in 2012



Source: Loveland Products Tech Services, 2012.

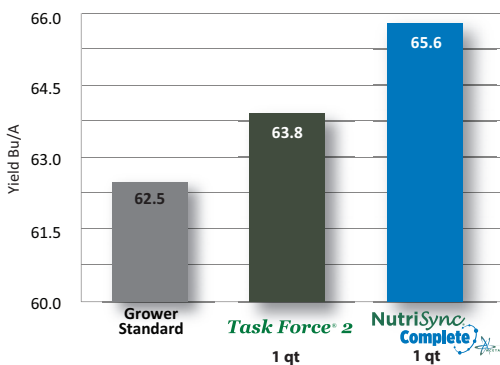
NutriSync Complete Corn Trials, 2016



All treatments applied v6 corn. All include LI 700@ 0.125%

Source: Tech Services, 2016.

NutriSync Complete Soybean Trials, 2016

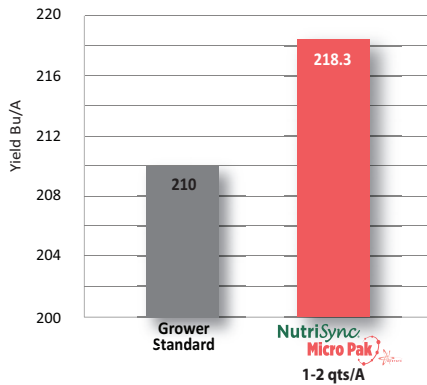


All treatments applied v6 6-26. All include LI 700@ 0.125%

Source: Tech Service, 2016.

NutriSync Complete is not registered for use in California or Oregon.

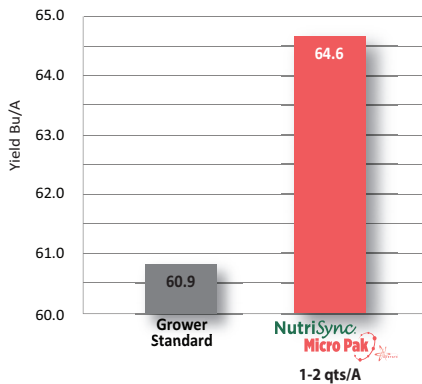
NutriSync Micro Pak Corn Trials (26 comparisons)



* Applied during early vegetative stage.

Source: Loveland Tech Services, 2014 to 2016.

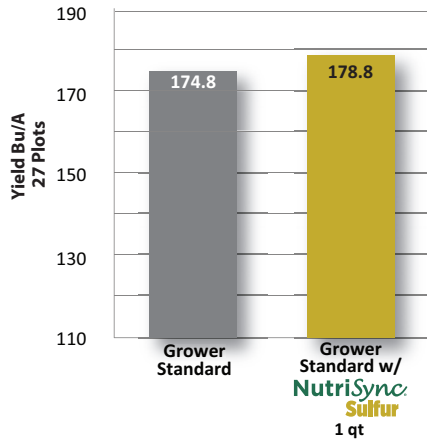
NutriSync Micro Pak Soybean Trials (26 comparisons)



* Applied during early vegetative stage.

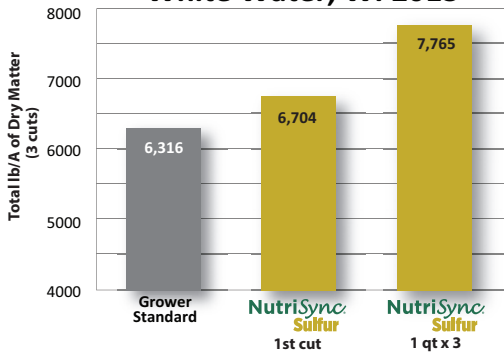
Source: Loveland Tech Services, 2014 to 2016.

NutriSync Sulfur Corn Trials 2014-2017



Source: Nutrien Ag Solutions Grower Plots

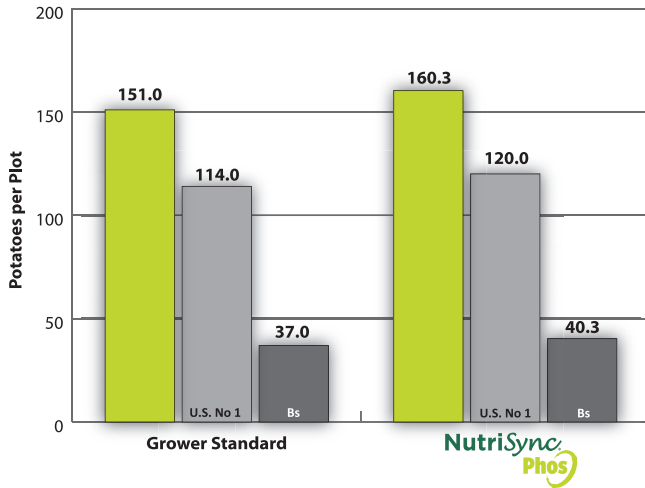
Foliar Alfalfa Nutrition White Water, WI 2013



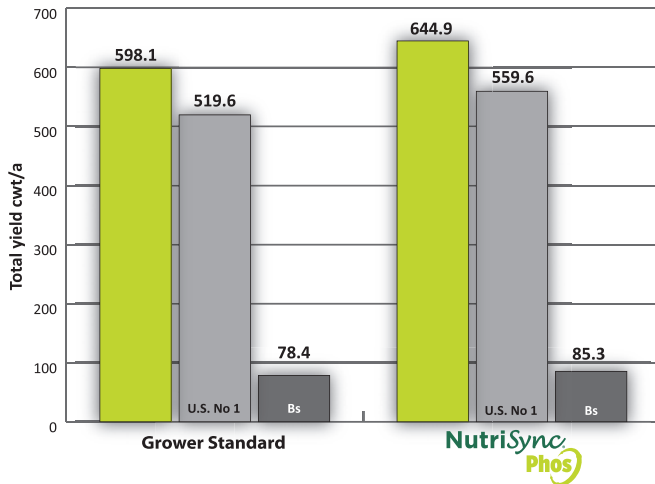
Applications: 1 greenup; 2 after 1st cut; 3 after 2nd cut

Source: CP Bio, 2013.

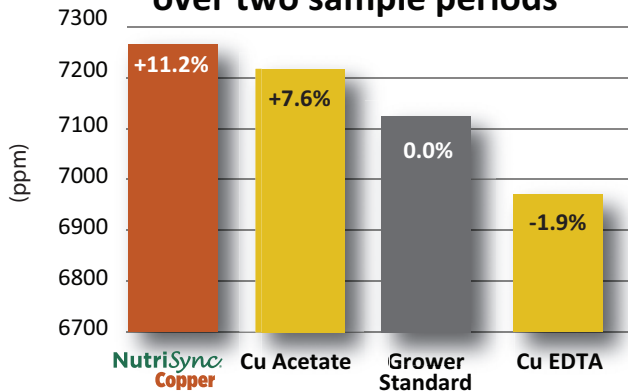
Potatoes per Plot - Michigan



Total Yield - Potatoes, Michigan

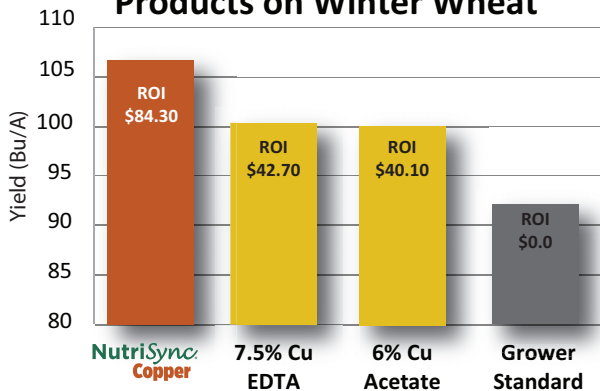


Average Nutrient Uptake over two sample periods



Source: Loveland Products Tech Services Agronomist, 2013.

Comparison of Copper Products on Winter Wheat



Source: Loveland Products Tech Services Agronomist, 2013.

Contact Your Nutrien Ag Solutions Retailer

Loveland Products, Inc.

3005 Rocky Mountain Ave.

Loveland, CO 80538

(970) 685-3300

www.lovelandproducts.com



*For more information on NUTRISYNC products, please visit www.lovelandproducts.com or contact your local Loveland Products retail distributor. ALWAYS READ AND FOLLOW ALL LABEL DIRECTIONS. Check state registration. BOROSOL, NUTRISYNC, and TASK FORCE are registered trademarks of Loveland Products, Inc.
8016_E1418*