



SOIL APPLIED

Extract Powered by Accomplish™ (Extract PBA) (6-0-0-13S) is a biocatalyst formulated to maximize nutrient release from a grower's fertilizer investment. Extract PBA is optimized to help growers easily manage nutrients tied up in the soil, in crop residue and in manures/litters by accelerating the release of existing nutrition while also increasing nutrient availability. For use with poultry manure or litter applications, Extract PBA can be applied with burndown herbicide programs or with pre-emergent herbicides.

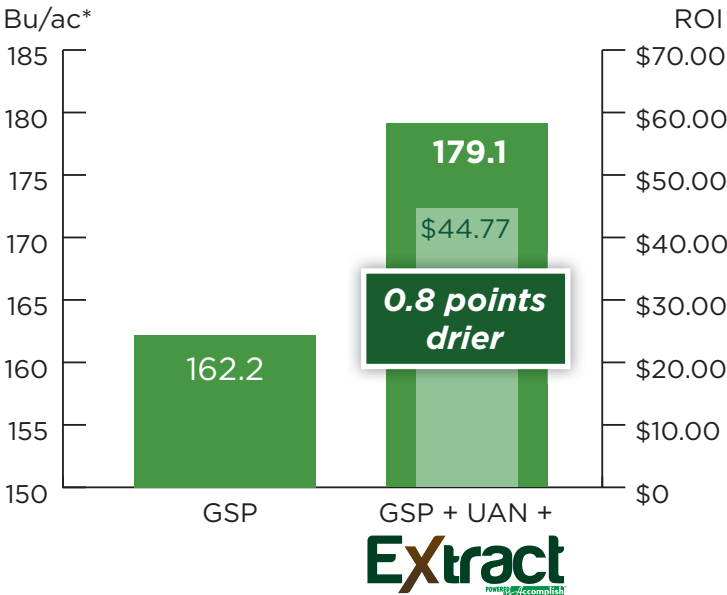
PRODUCT BENEFITS:

- Maximizes nutrient release from soil, crop residue and manures/litters – more nutrients available faster
- Converts organic nutrients into plant available forms
- Improves plant performance for increased nutrient uptake
- Enhances nutrient use efficiency
- Optimizes yield potential

Corn – Owensboro, KY

Extract PBA applied at 1 gal/acre with 1 gal/acre UAN; GSP is 3 tons/acre turkey manure fall applied

Soil Sample Comparison

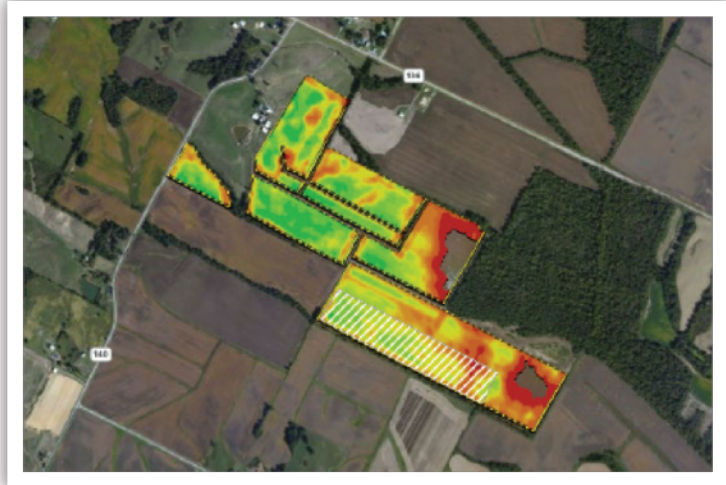
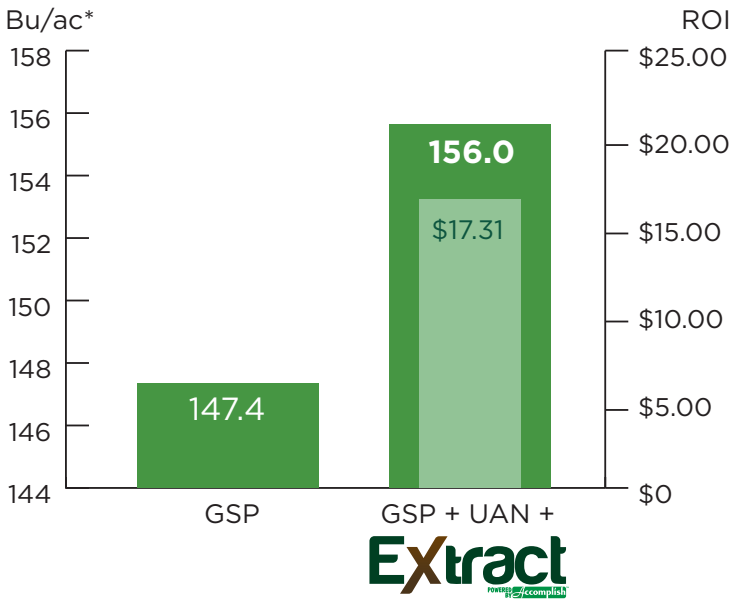


Nutrient	Soil (Jan 5 th)		
	GSP	Extract	% Change
P	54	51	-5.6%
K	263	275	4.6%
Mg	450	457	1.6%
Ca	4009	3787	-5.5%
Ph	6.8	6.6	-2.9%
Buffer pH	7.8	7.75	-0.6%
S	17	17	0.0%
B	0.9	1	11.1%
Zn	3.2	3.9	21.9%
Mn	53	49	-7.5%
Fe	414	563	36.0%
Cu	4.5	4.9	8.9%
OM%	1.79	1.86	3.9%
CEC	13.8	13.7	-0.7%
K%	2.4	13.9	8.3%
Mg%	13.6	13.9	2.2%
Ca%	72.4	69	-4.7%
H%	11.6	14.6	25.9%

*At 15% moisture
ROI assumes \$10.00/bu soybeans

Corn - Owensboro, KY

Extract PBA applied at 1 gal/acre with 1 gal/acre UAN; GSP is 2.5 tons/acre turkey litter fall applied



*At 13% moisture
ROI assumes \$3.30/bu corn